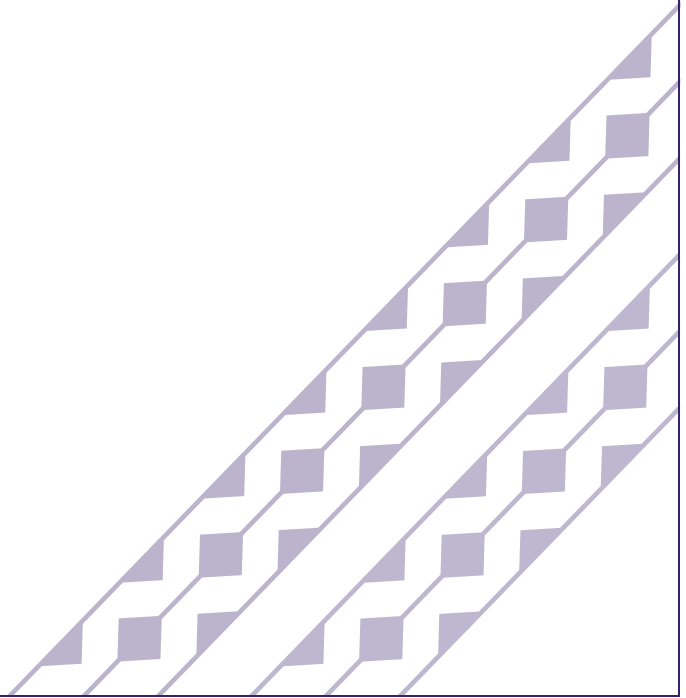
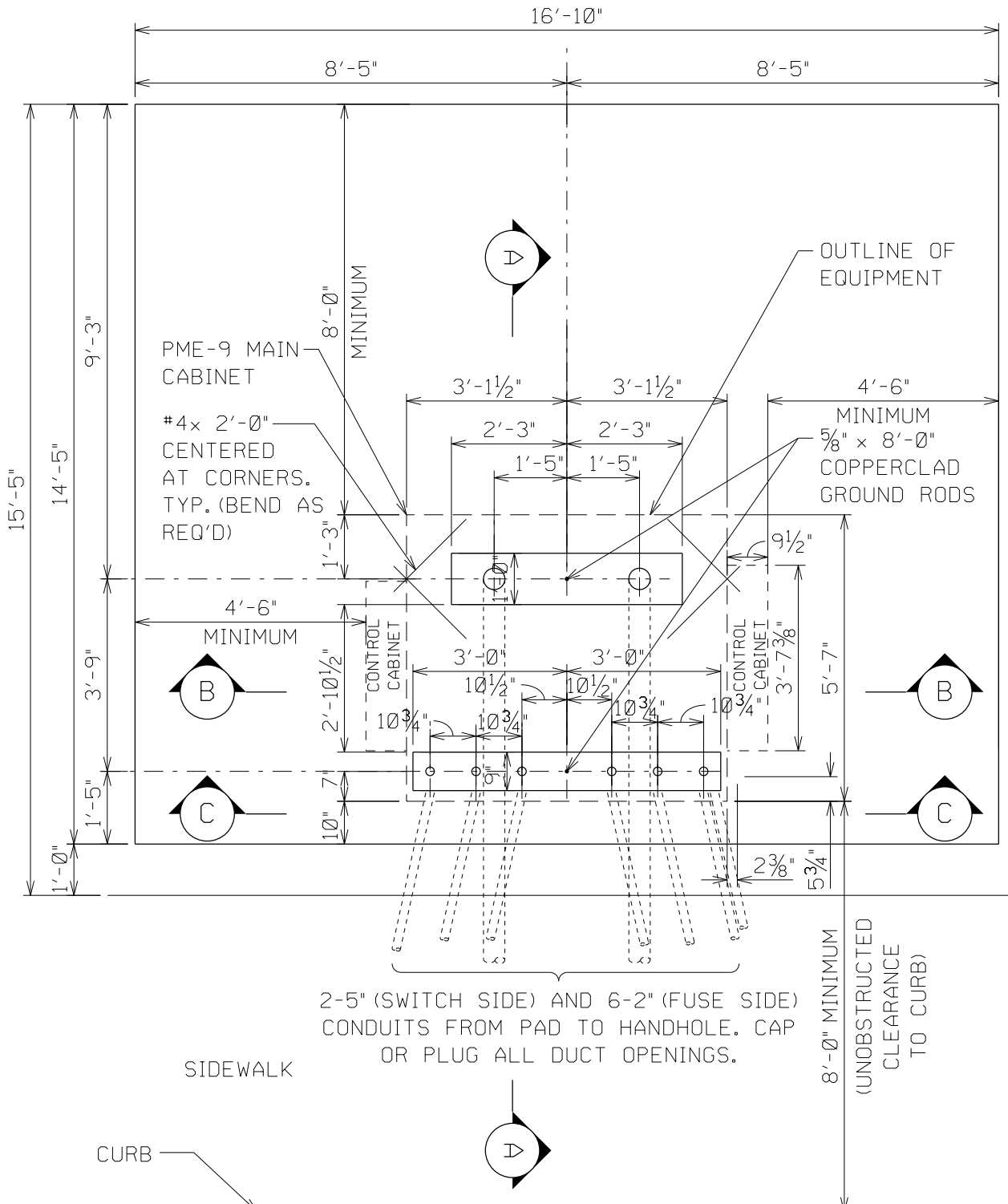




**Hawaiian  
Electric**

The information found in this document are general guidelines that may be used to aid in the preparation of your service request proposal. Please be advised that depending on the specific needs and actual conditions of your project, Hawaiian Electric may require your design to comply with different specifications including specifications that include more stringent requirements than those included in these design specification guidelines. For further guidance and clarification on the actual specifications that will apply to your particular project, please refer to instructions issued by Hawaiian Electric's Planner or Engineer who is assigned to your particular (Project/Review Request/...). Additionally, please be advised that Hawaiian Electric reserves the right to require additional modifications to any approved design if it is determined during actual construction that additional modifications must be made to address certain field conditions that were not detected or Hawaiian Electric was unaware of during the design review process.

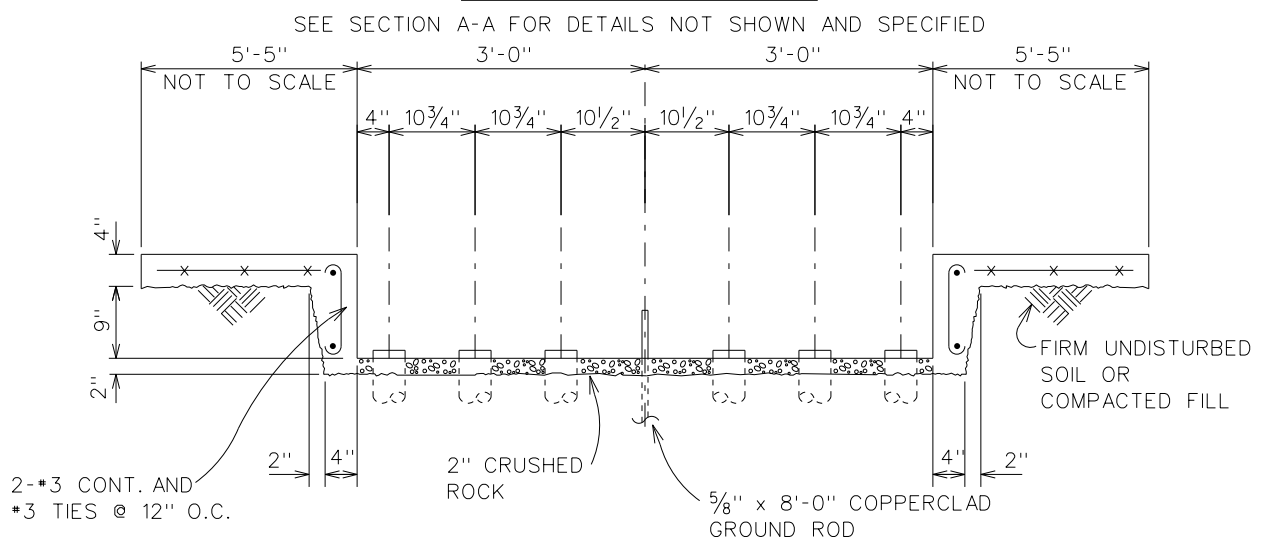
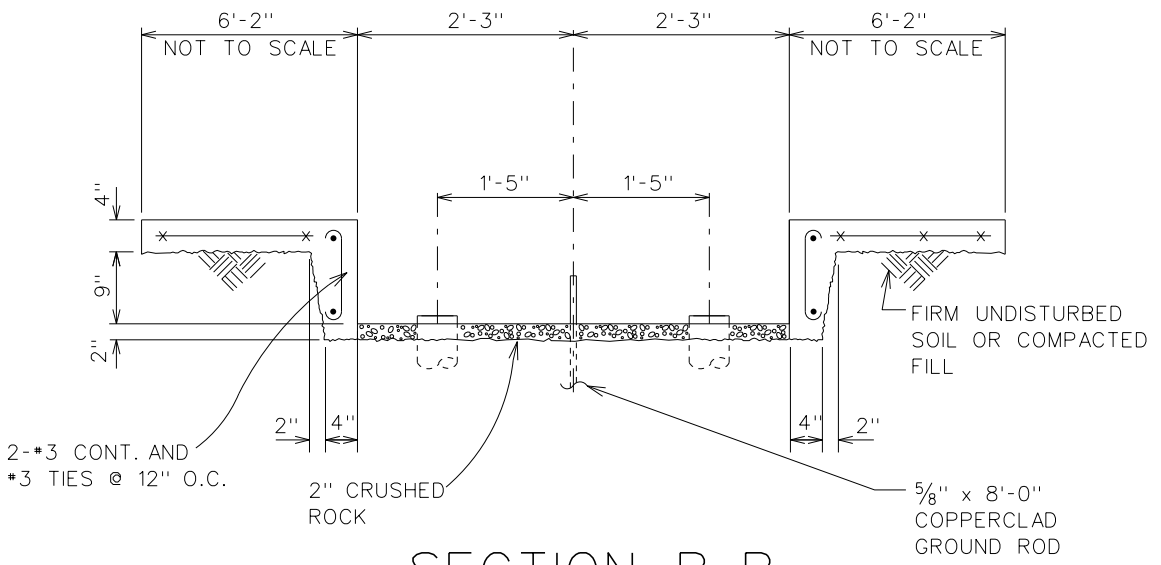
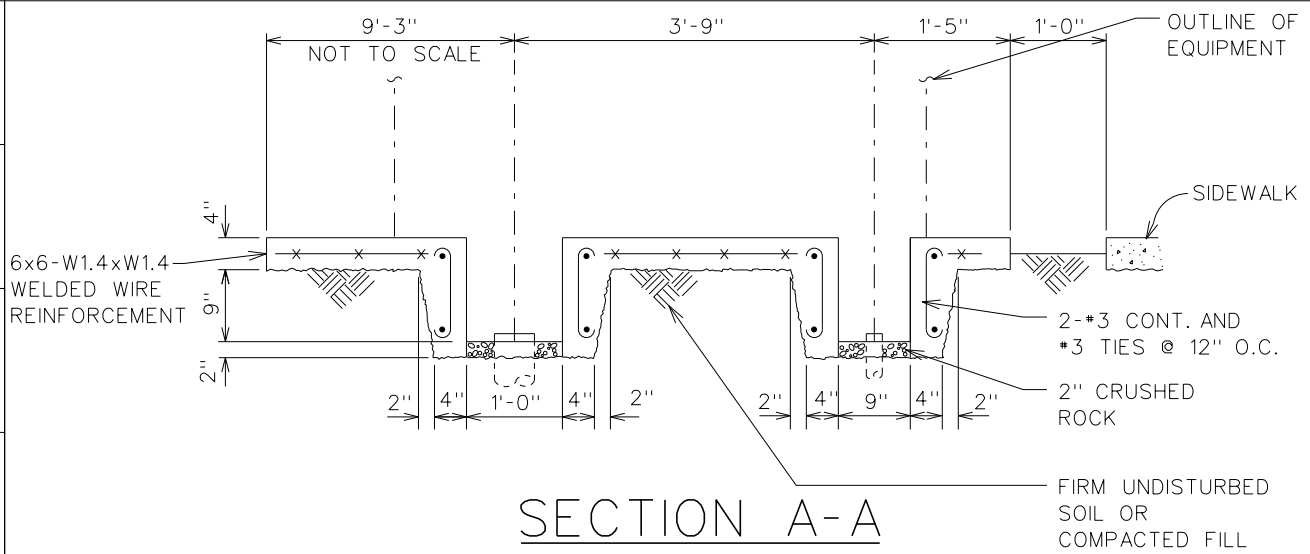




PLAN

SEE SHEET 3 FOR NOTES

DATE INITIAL	01-19 DU HH WH	07-21 DU <i>dyg</i> (H)	REVISION	APPD	HH RAN WHH	REDRAWN
DRAWN AP			DESIGNED	HH RAN		ORIGINAL 03-15
SUPERSEDES			CONCRETE PAD INSTALLATION (WITH SIDEWALK) PME-9 AUTO TRANS. SWGR. ENCLOSURE UG DUCTS & STRUCTURES 15KV			30-5052
ENGINEERING STANDARD HAWAIIAN ELECTRIC CO. INC.						REV 2
						SHEET 1 of 3



SEE SECTION A-A FOR DETAILS NOT SHOWN AND SPECIFIED

DATE	07-21	INITIAL	DUNGG	REVISION		DRAWN	AP	DESIGNED	HH RAN	APPD	HH RAN WHH	REDRAWN	
SUPERSEDES				CONCRETE PAD INSTALLATION (WITH SIDEWALK)				ORIGINAL 03-15					
ENGINEERING STANDARD HAWAIIAN ELECTRIC CO. INC.				PME-9 AUTO TRANS. SWGR. ENCLOSURE UG DUCTS AND STRUCTURES 15KV				30-5052		REV 1			
								SHEET 2 of 3					

IP\_PWP:dms04781\pst305052\_02.dgn

dung

26-JUL-2021 12:21

